

Number	Country	Description	Price \$	Graphics
--------	---------	-------------	----------	----------



Sutherland Philatelics

**PO Box 448
Ferny Hills D C, Qld 4055
Australia**

ABN: 69 768 764 240

website: sutherlandphilatelics.com.au

e-mail: sutherlandphil@bigpond.com

phone / fax: international: 61 7 3851 2398; domestic: 07 3851 2398



S P E C I A L S

LIST 16

When we buy collections, we frequently acquire items which do not fit into our standard price lists or provide quantities which exceed our stock requirements. As these lots are one-off non-stock items, or excess-stock multiple copies, we are prepared to discount their prices significantly.

Where we have multiple lots available, we show

MULTIPLE

next to the price box.

In these cases, if you would like more than one lot, please advise the number required and we will indicate availability.

The scanned image is generic where there are multiple lots available.

Please state the number for each item when ordering.

All items remain on sale until sold or withdrawn.

There is no expiry date for this list.

**NOTE: Prices are for each item only and include GST
Postage, packing & insurance is extra.**

Please note that GST (currently 10%) is applicable from 1 July 2000.
International sales are GST free.

The prices in this list

INCLUDE

GST

All prices are in Australian dollars.

E&OE

Number	Country	Description	Price \$	Graphics
--------	---------	-------------	----------	----------

16-1 **SOLD**

16-2 **SOLD**

16-3 **Great Britain:** Cinderella: 1994 The Channel Tunnel M/S MUH

SG	Normal Price	\$8.10
SB110a	Special Price	\$6.00



16-4 **SOLD**

16-5 **SOLD**

16-6 **Isle of Man:** 1994 Calf of Man Bird Observatory M/S - VFU cancelled FDI

SG	Normal Price	\$6.00
589MS	Special Price	\$4.50



16-7 **SOLD**

16-8 **East Timor:** 2002 First issue since becoming independent - MUH



SG	Normal Price	\$10.80
5-8	Special Price	\$7.00

16-9 **SOLD**

16-10 **SOLD**

Number	Country	Description	Price \$	Graphics
--------	---------	-------------	----------	----------

16-11 **USA:** All different MINT (hinged) collection of commemorative issues from the 1960s to 1970s; not complete. Excellent starter for a USA collection. A fascinating country with a rich heritage epitomised by Hollywood movies and historical achievements. Values range from 5¢ to 8¢
88 stamps + 1 M/S @ only 12¢ per stamp

Lots 16-11 & 16-12 contain all different stamps with no duplication within or between lots

Special Price \$10.50



16-12 **USA:** All different MINT (hinged) collection of commemorative issues from the 1970s to 1980s; not complete. Excellent starter for a USA collection. A fascinating country with a rich heritage epitomised by Hollywood movies and historical achievements. Values range from 10¢ to 22¢
86 stamps @ only 30¢ per stamp

Lots 16-11 & 16-12 contain all different stamps with no duplication within or between lots

Special Price \$25.50



16-13 **SOLD**

16-14 **Australia:** Cinderella - VFU FDI \$10 duck stamp -- Kakadu National Park entrance ticket cancelled 1-7-93 First Day of Issue

Special Price \$25.50

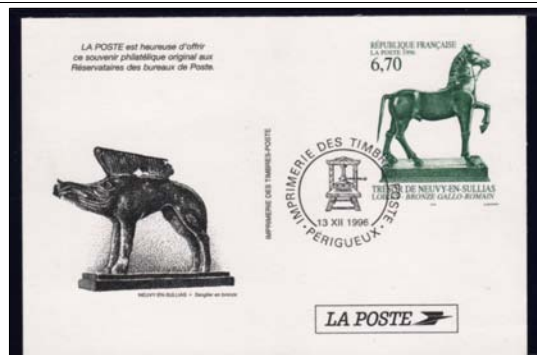


Number	Country	Description	Price \$	Graphics
16-15		SOLD		
16-16		SOLD		
16-17		SOLD		
16-18		SOLD		
16-19		SOLD		

Number	Country	Description	Price \$	Graphics
--------	---------	-------------	----------	----------

16-20 **France:** 2 prestamped cards featuring Puss in Boots Europa 1997 & Bronze Horse found at Neuvy-en-Sullias. Same designs as corresponding stamps, but in different colours.

Clean & very attractive.

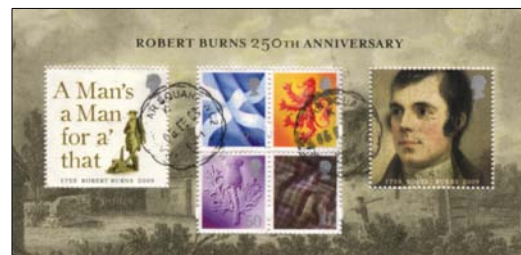


Special Price \$4.00

16-21 **Great Britain:** Robert Burns M/S FV

Commercially used; a little crinkled from soaking, but will straighten out when pressed.

SG	Normal Price	\$10.20
S137MS	Special Price	\$7.00



16-22 **Australia:** Complete set Threatened Species counter-printed self-adhesive stamps from the Canberra Parliament House Post Office machine bearing the short-lived ACT93 literal (the scarcest for this series). Each stamp is denominated 45¢ and VFU. Although difficult to see, the Little Pygmy Possum has unfortunately sustained a vertical tear to the bottom edge of the design just left of the literal.

ASC	BW ACSC	Normal Price	\$16.50
1320aa-5aa	1670A-F	Special Price	\$10.00



16-23 **Australia:** MUH 1982 Commonwealth Games M/S overprinted 'National Stamp Exhibition Brisbane 1982 / ANPEX 82' and also numbered bottom right.

MULTIPLE

ASC	Normal Price	\$4.40
854msa	Special Price	\$3.00



Number	Country	Description	Price \$	Graphics
--------	---------	-------------	----------	----------

16-24 **SOLD**

16-25 **Denmark:** Packet 70 different used commemorative and definitive stamps, 1890s-1980s.

Normal Price	\$20.00
Special Price	\$10.00



16-26 **Great Britain:** Grouping of 3 different listed cylinder varieties for Wildings:
 (1) "Diadem" flaw on SG 581 8d magenta, multiple crowns wmk, used (missing 3 perfs top right side) [S122a]
 (2) "Frame Break at Upper Right" variety on SG 582 9d bronze-green, multiple crowns wmk, used [S127b]
 (3) "Extra Pearl" variety on SG 617b 8d magenta, mult crowns wmk, FU [S123b]



Circles indicate flaw location.

Normal Price	\$16.50
Special Price	\$11.00

16-27 **Great Britain:** Packet 100 different used predecimal and decimal commemorative stamps from 1958 to 1999-2000 Millenium series.

Special Price	\$15.00
---------------	---------



16-28 **Great Britain:** Selection of 9 different listed cylinder varieties on predecimal commemoratives (+ 1 unlisted flaw):

- (1) "White Ear" variety on 1961 2p CEPT [SG 626b], used
- (2) "Dash before England" on 1966 4d Landscapes [SG 689a], used
- (3) "Broken 'D'" variety on 1966 1/3d Landscapes [SG 691a], used
- (4) "Missing 'T'" variety on 1966 3d Christmas [SG 713pb], MUH
- (5) "Cowling flaw" on 1967 1/6d Discovery / Invention [SG 754c] PLUS unlisted vertical red line flaw on 4d, both used
- (6) "No curve to slab" variety on 1968 4d Bridges [SG 763d], used
- (7) "Broken bulwarks" variety on 1968 1/9d British Anniversaries [SG 770b], used
- (8) "Broken arch" variety on 1969 1/6 Christmas [SG 814i], commercially used (flaw is not obscured by postmark)
- (9) "Weak entry" variety on 1970 5d Philympia [SG 835e], used used condition



Circles indicate flaw location.

TOTAL 10 stamps

Normal Price	\$40.00
Special Price	\$20.00

Number	Country	Description	Price \$	Graphics
--------	---------	-------------	----------	----------

16-29 Great Britain: Used selection of the highly popular vertical small head machin definitives from predecimal to decimal up to £5 - 100 in total. Because there is no duplication (**all 100 are different!**), this accumulation amounts to just on 60% of the issues at a simplified level (excluding regionals). Elliptical perfs and NVIs are represented.

Special Price \$20.00



16-30 Great Britain: Lot of 3 different listed cylinder varieties for decimal machins
 (1) "Deformed base to 2" variety on 1/2p turquoise blue machin, 2B [SG X841 / U46e]. It is mint, no gum.
 (2) "Background retouch & broken cross" variety on 6 1/2p greenish blue machin CB [SG X872 / U149h] in used condition. The flaw is clear of the machine cancellation.
 (3) "Retouches above and below value" variety on 50p ochre brown machin 2B [SG X921 / U426c] in used condition.



Circles indicate flaw location.

Normal Price \$18.50
Special Price \$9.00

TOTAL 3 stamps

16-31 Great Britain: Selection of 5 different listed cylinder varieties on decimal commemoratives:
 (1) "Dot over 'a' of 'Barton'" variety on 1977 8 1/2p Chemistry [SG 1029c], commercially used.
 (2) "Broken 'C' in 'Court'" variety on 1978 13p British Architecture [SG 1057a], used.
 (3) "Pale curved scratch (at top of wing)" variety on 1981 18p Butterflies [SG 1152b], used.
 (4) "Broken branch above left hand bird's head" variety on 1980 10p Christmas [SG 1138c], used (has light creasing top right corner)
 (5) "Large red spot on flag" variety on 1981 26p Youth Organisations [SG 1181a], used.



Circles indicate flaw location.

Normal Price \$18.50
Special Price \$13.00

TOTAL 5 stamps

16-32 Jersey: Two different listed cylinder varieties for predecimal Wildings:
 (1) "Joined tomato" variety on 1958 3d deep lilac QEII (cream paper), [SG 10 / XJ2a], used
 (2) "Leaf dot" variety on 1968 5d Royal blue QEII [SG 14 / XJ9a], used



Circles indicate flaw location.

Normal Price \$13.20
Special Price \$8.50

TOTAL 2 stamps

Number	Country	Description	Price \$	Graphics
--------	---------	-------------	----------	----------

- 16-33** **Great Britain:** Three different listed cylinder varieties for regional machins:
- (1) Northern Ireland - "No top to cross on crown" variety on 1974 5½p violet machin [SG NI 20 / XN29b], used
 - (2) Scotland - "Missing claw to lower fore paw" variety on 1976 6½p greenish blue machin [SG S23/XS45e], used
 - (3) Wales - "Two wing-tips missing" variety on 1974 8p rosine machin [SG W25/XW36a], used



Circles indicate flaw location.

TOTAL 3 stamps

Normal Price	\$13.20
Special Price	\$9.50

- 16-34** **Great Britain:** Used selection of Channel Islands and regional predecimal Wildings, decimal machin and recent pictorial definitives. There is no duplication and the lot includes some harder to come by items (eg 5p), higher values, and NVIs. [Total stamps = 60]



Special Price	\$12.00
----------------------	----------------